

Ursula's Freilach

C1
Piano

Form: Melodie: //:AABB:// CC AABB

Alle Impro: //:AABB:// CC

Helmut Eisel

A Schlussmelodie: AABB CCCC=>Coda

D7 ♩ = 120

Cm7

D7

A ♩ = 120

Bp

5

Cm7

D7

D.C. con rep

B

D.C. con rep

Cmf

9

Gm

D7

To Coda

Gm

C

To Coda

Of

13

D7

Cm7

D7

p

Ursula's Freilach

C1

Form: Melodie: //:AABB:// CC AABB

Alle Impro: //:AABB:// CC

Schlussmelodie: AABB CCCC=>Coda

Helmut Eisel

A D^7 $\text{♩} = 120$ Cm^7 D^7

B Cm^7 D^7 **D.C. con rep**

C Gm D^7 **To Coda** Gm

13 D^7 Cm^7 D^7

p

Ursula's Freilach

C2-4


Form: Melodie: //:AABB:// CC AABB

Alle Impro: //:AABB:// CC

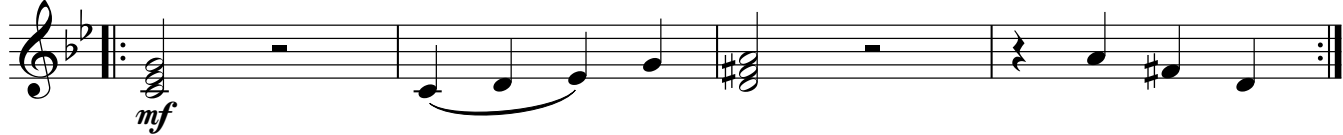
Schlussmelodie: AABB CCCC=>Coda

Helmut Eisel

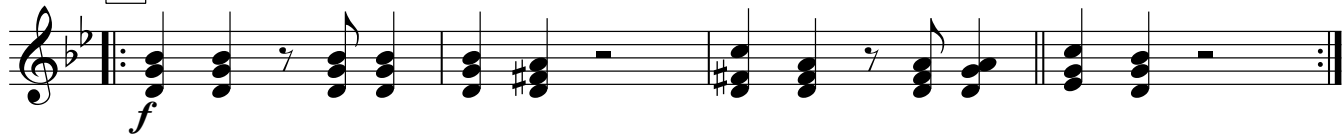
A $\text{♩} = 120$
erst ab D.C. mitspielen! à 3



B à 3 à 3 D.C. con rep

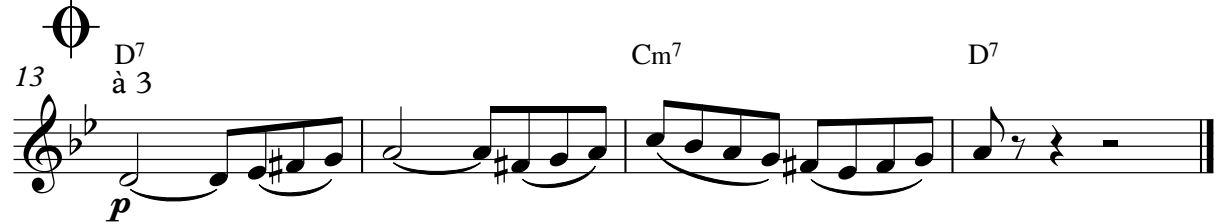


C To Coda



13 ♩ D^7 Cm⁷ D⁷

p à 3



Ursula's Freilach

Viola

Form: Melodie: //:AABB:// CC AABB

Alle Impro: //:AABB:// CC

Schlussmelodie: AABB CCCC=>Coda

Helmut Eisel

A D⁷ ♩ = 120 Cm⁷ D⁷

p

5 **B** Cm⁷ D⁷ **D.C. con rep**

mf

9 **C** Gm D⁷ **To Coda** Gm

f

13 **⊕** D⁷ Cm⁷ D⁷

p

Violoncello

Ursula's Freilach

Form: Melodie: //:AABB:// CC AABB

Alle Impro: //:AABB:// CC

Schlussmelodie: AABB CCCC=>Coda

Helmut Eisel

A D⁷ ♩ = 120
octave lower ad lib

B Cm⁷ D⁷ D.C. con rep

C Gm D⁷ To Coda Gm

13 D⁷ octave lower ad lib Cm⁷ D⁷

Bb1

Ursula's Freilach

Form: Melodie: //:AABB:// CC AABB

Alle Impro: //:AABB:// CC

Schlussmelodie: AABB CCCC=>Coda

Helmut Eisel

A $\text{♩} = 120$
E7

p

5 **B** Dm7 E7 **D.C. con rep**

mf

9 **C** Am E7 **To Coda** Am

f

13 ♩ E7 Dm7 E7

p

Ursula's Freilach

Form: Melodie: //:AABB:// CC AABB

Alle Impro: //:AABB:// CC

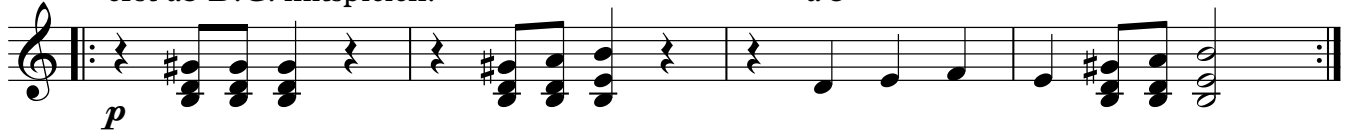
Schlussmelodie: AABB CCCC=>Coda

Helmut Eisel

A ♩ = 120

erst ab D.C. mitspielen!

à 3



5

B

à 3

à 3 D.C. con rep



9

C

To Coda



13

E7
à 3

Dm7

E7



Bassklarinette in B

Ursula's Freilach

Form: Melodie: //:AABB:// CC AABB

Alle Impro: //:AABB:// CC

Helmut Eisel

Schlussmelodie: AABB CCCC=>Coda

A E7 ♩ = 120

Dm7

E7

Musical staff for section A, starting with a treble clef and a repeat sign. The melody consists of eighth notes with rests. The dynamic marking *p* is placed below the first note.

5 **B** Dm7

E7

D.C. con rep

Musical staff for section B, starting with a treble clef and a repeat sign. The melody consists of eighth notes. The dynamic marking *mf* is placed below the first note.

9 **C** Am

E7

To Coda Am

Musical staff for section C, starting with a treble clef and a repeat sign. The melody consists of eighth notes. The dynamic marking *f* is placed below the first note.

13

Musical staff for the coda, starting with a treble clef and a repeat sign. The melody consists of eighth notes. The dynamic marking *p* is placed below the first note.

Eb1

Ursula's Freilach

Form: Melodie: //:AABB:// CC AABB

Alle Impro: //:AABB:// CC

Schlussmelodie: AABB CCCC=>Coda

Helmut Eisel

A B⁷ ♩ = 120
octave lower ad lib

B Am⁷ B⁷ D.C. con rep

C Em B⁷ To Coda Em

13 B⁷ octave lower ad lib Am⁷ B⁷

p *mf* *f* *p*

Ursula's Freilach

E♭2-4

Form: Melodie: //:AABB:// CC AABB

Alle Impro: //:AABB:// CC

Helmut Eisel

Schlussmelodie: AABB CCCC=>Coda

A $\text{♩} = 120$
erst ab D.C. mitspielen!

B
5 à 3 à 3 D.C. con rep

C
9 To Coda

13 à 3 B7 Am7 B7

Horn in F

Ursula's Freilach

Form: Melodie: //:AABB:// CC AABB

Alle Impro: //:AABB:// CC

Schlussmelodie: AABB CCCC=>Coda

Helmut Eisel

A ♩ = 120
erst ab D.C. mitspielen! à 3

p

5 **B** **D.C. con rep**
à 3 à 3

9 **C** **To Coda**
mf
f

13 Φ A⁷ Gm⁷ A⁷
à 3

p

Ursula's Freilach

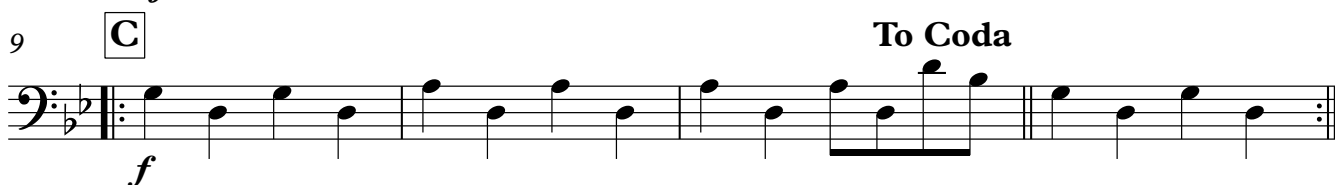
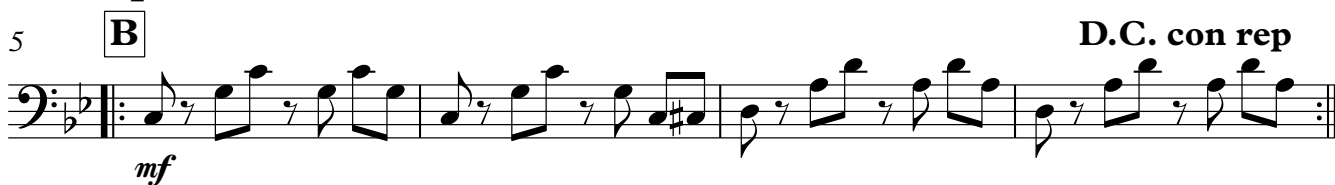
Form: Melodie: //:AABB:// CC AABB

Alle Impro: //:AABB:// CC

Schlussmelodie: AABB CCCC=>Coda

Helmut Eisel

A ♩ = 120



13



Ursula's Freilach

Drum Set

Form: Melodie: //:AABB:// CC AABB

Helmut Eisel

Alle Impro: //:AABB:// CC

Schlussmelodie: AABB CCCC=>Coda

A ♩ = 120



p

5

B

D.C. con rep

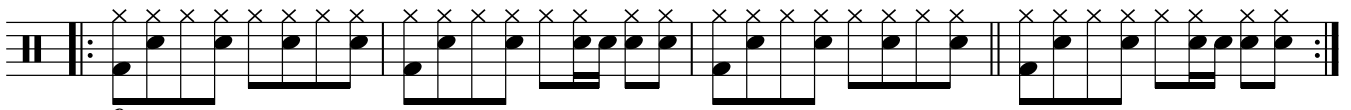


mf

9

C

To Coda



f



13



p